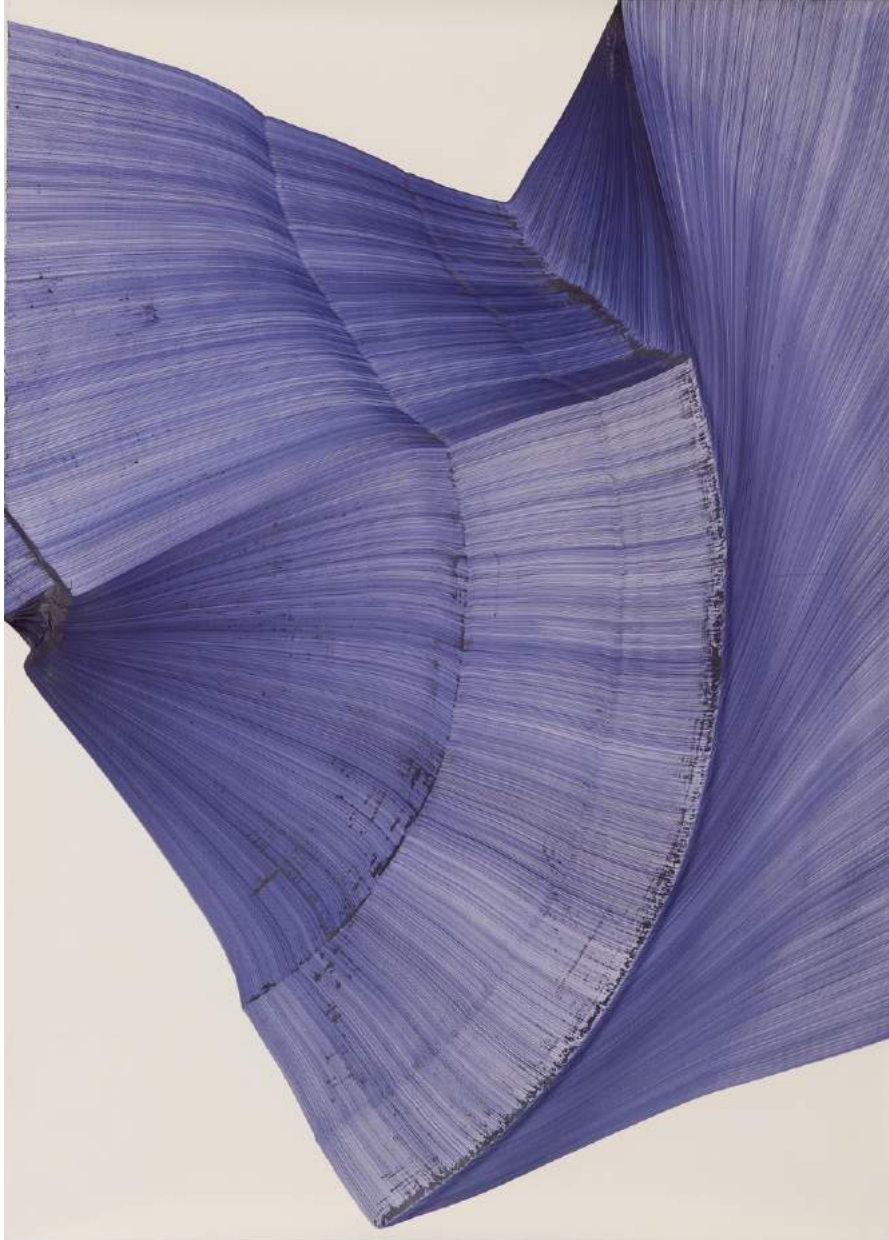


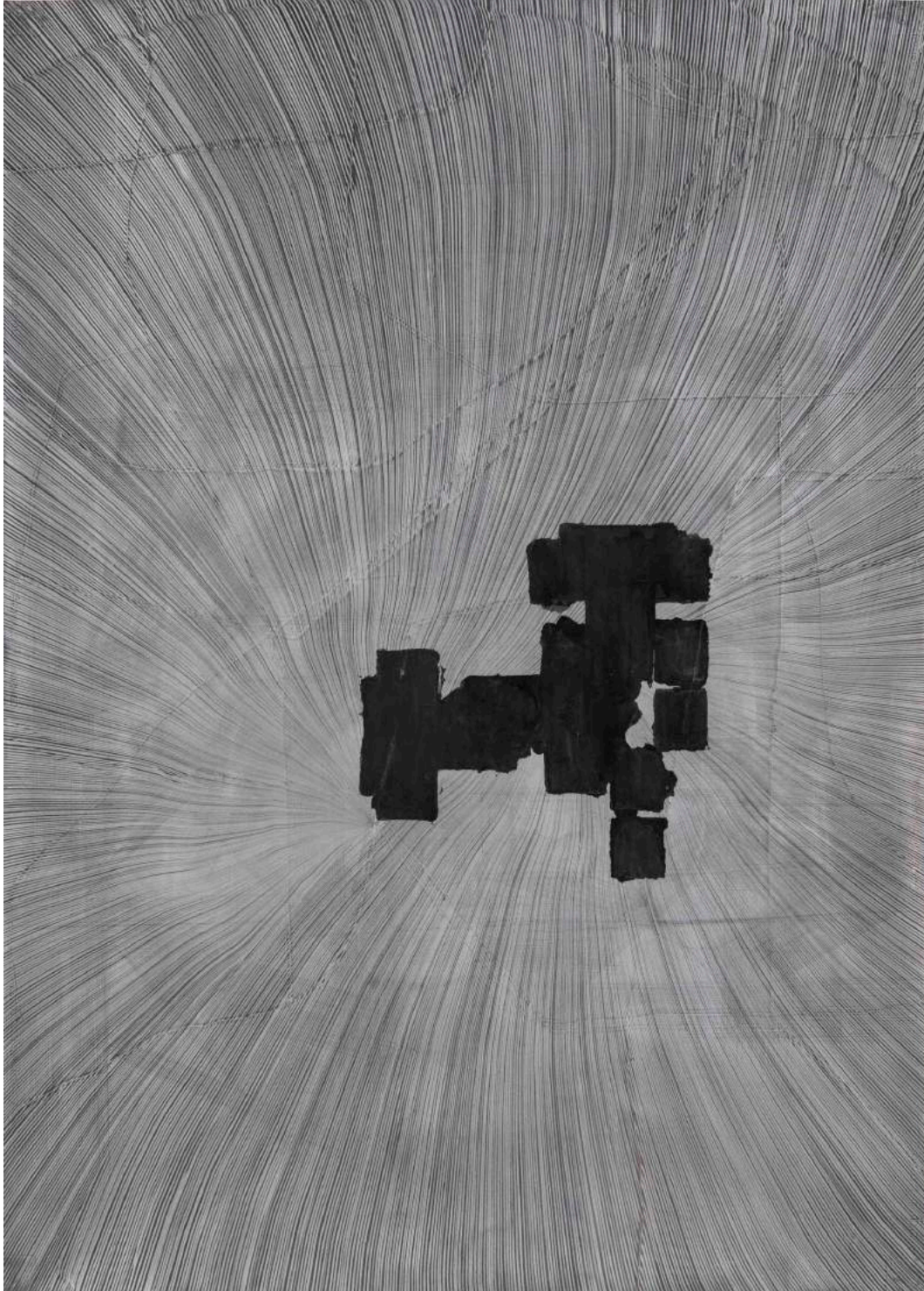
UNTITLED Miami 2019
Booth B15

THOMAS MÜLLER
Born 1959, Germany



o.T.
Ballpoint pen on Fabriano paper
196 x 140 cm
2019

C
P O
A H N
T E T
R I E
I D M A
C E P R
K O T
R
A
R
Y

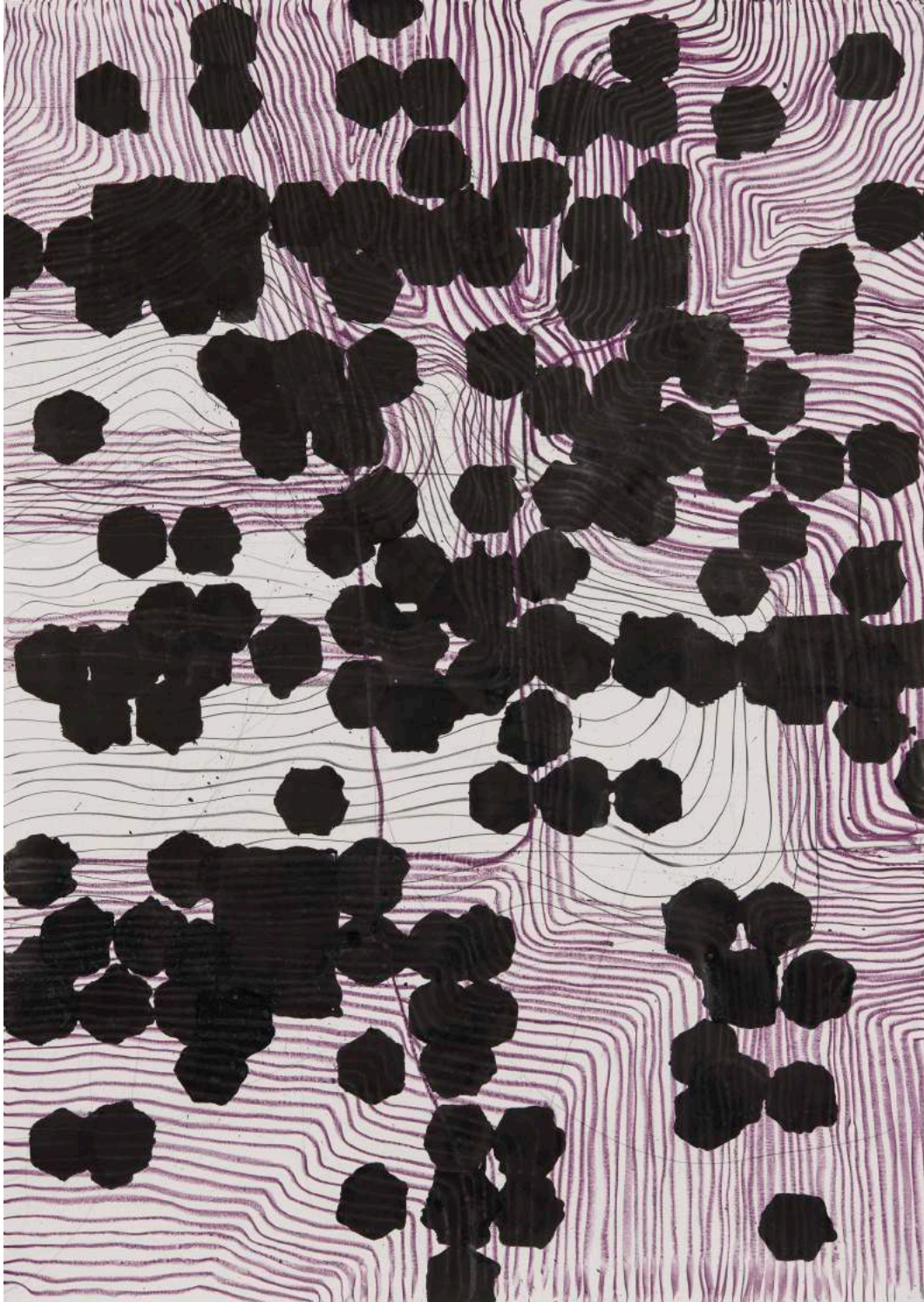


Untitled (PH 507)

Pencil, silver coloured pencil, acrylic and oil on Fabriano paper

196 x 140 cm

2018



Untitled (PH 508)

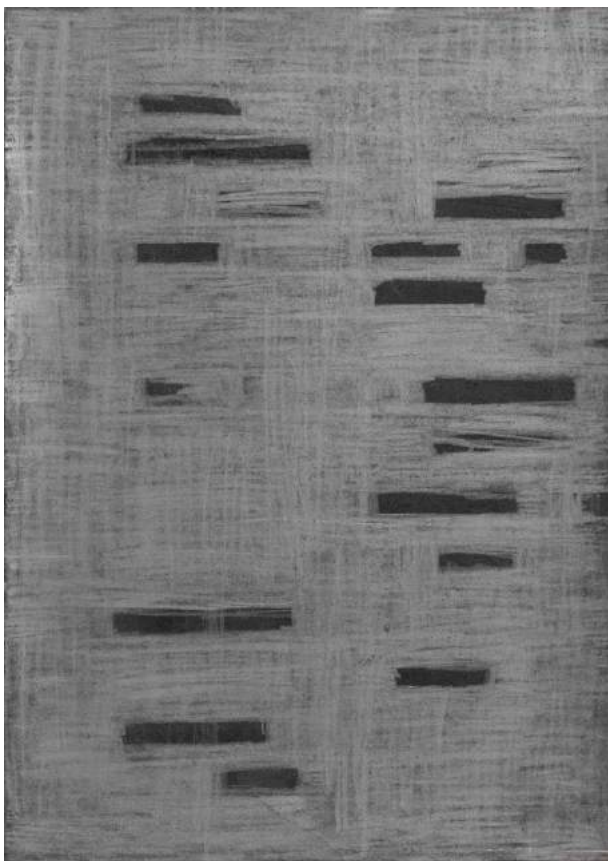
Pencil, chalk, oil stick and Indian ink on Arches paper

160 x 115 cm

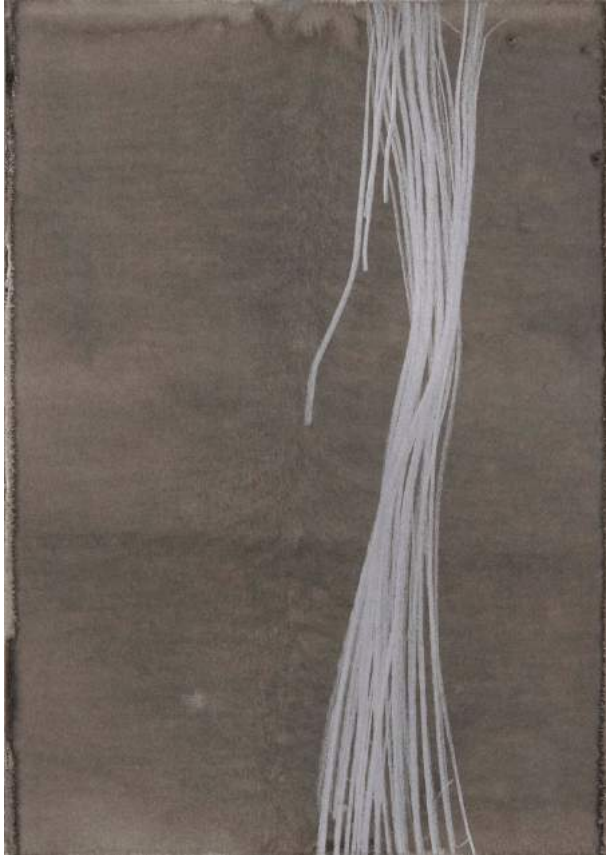
2018



Untitled (PH 468)
pencil, coloured pencil, chalk, acrylic on paper
29.7 x 21 cm
2018



Untitled (PH 470)
Silver coloured pencil, Indian ink on paper
29.7 x 21 cm
2018



Untitled (PH 479)
Indian ink, acrylic and silver coloured pencil on paper
29.7 x 21 cm
2019



Untitled (PH 481)
Pencil and oil colour on paper
29.7 x 21 cm
2019

SUSAN SCHWALB

Born 1944, United States

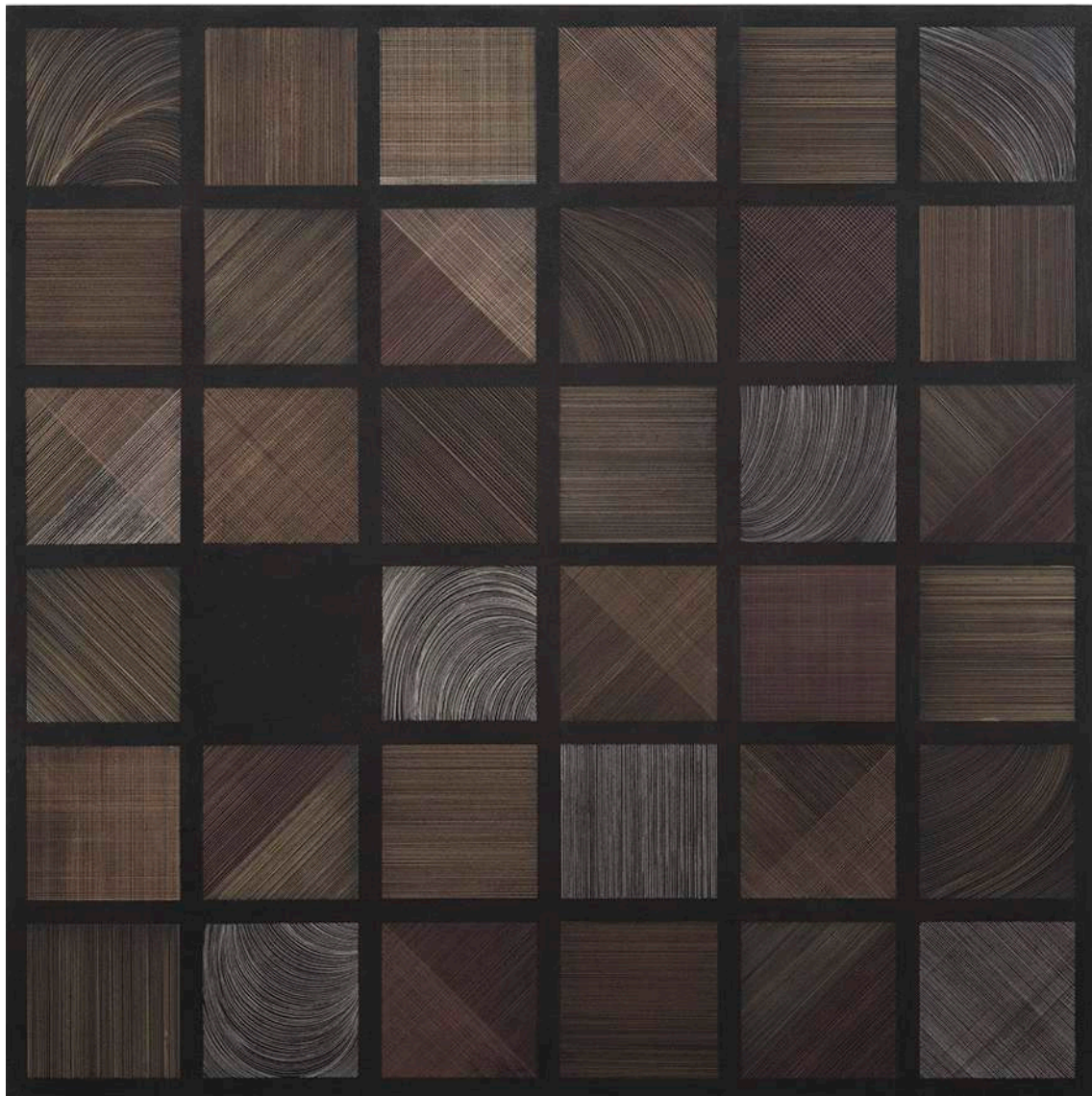


Currents II

Silver/aluminumpoint, aluminum brush, Aluminum wool pad, cobalt blue gesso on museum mount board on wood

76 x 76 x 5 cm

2018

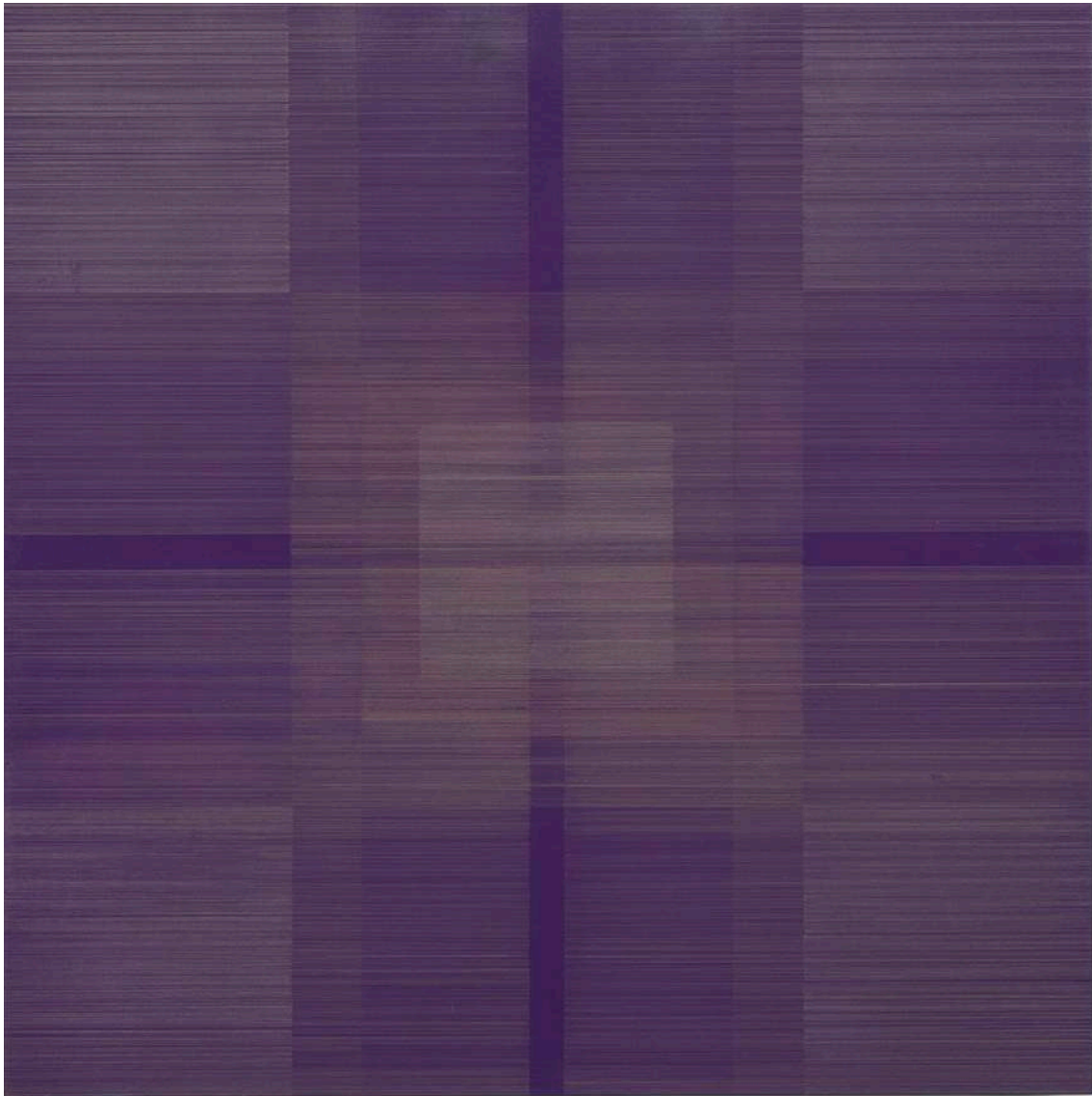


Harmonizations IX

Silver, gold, brass, copper, tin, aluminium point, black gesso on wood

61 x 61 x 5 cm

2019

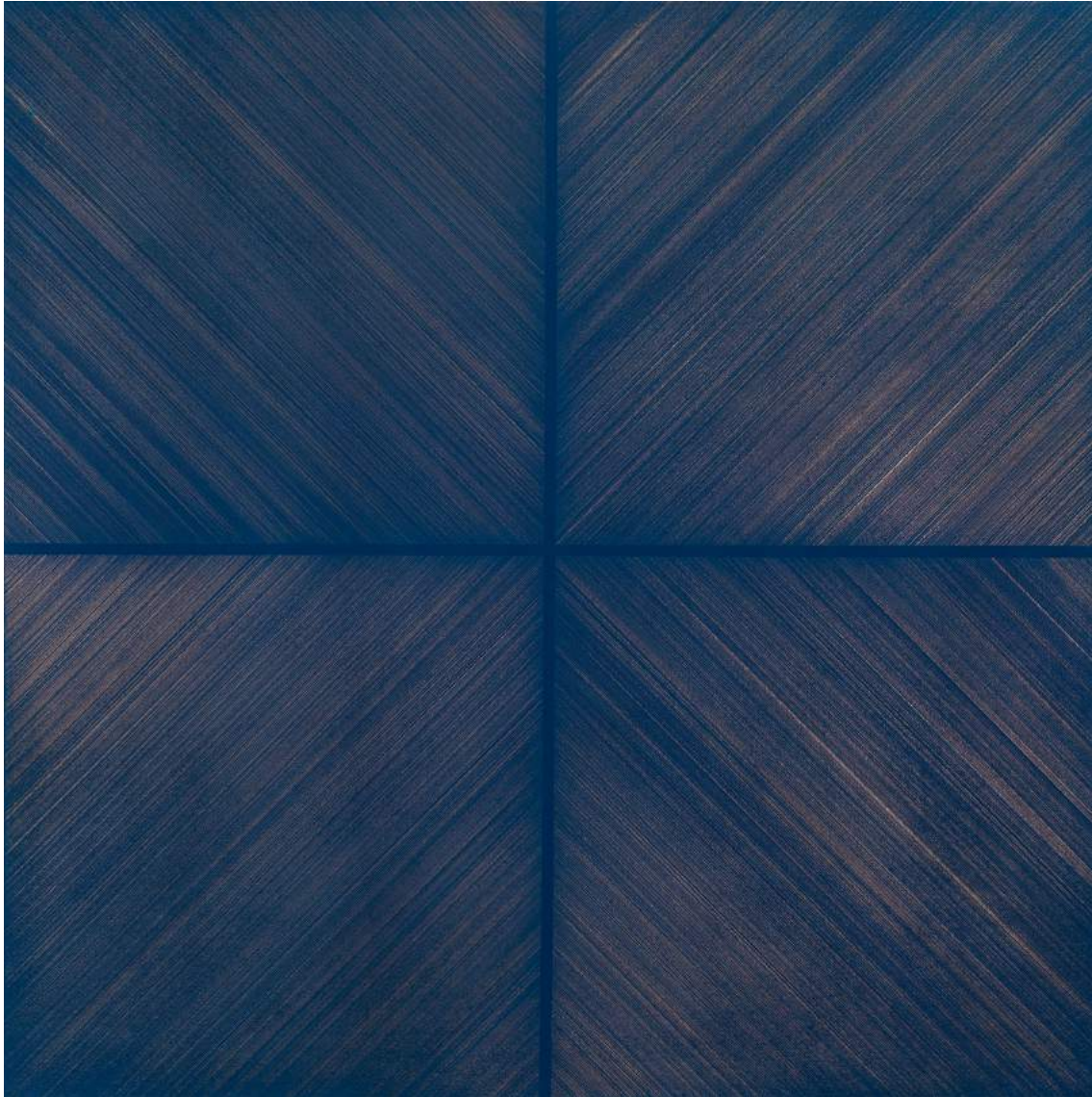


Polyphony XV

Silver, gold, copper, aluminium point, purple gesso, museum board on wood

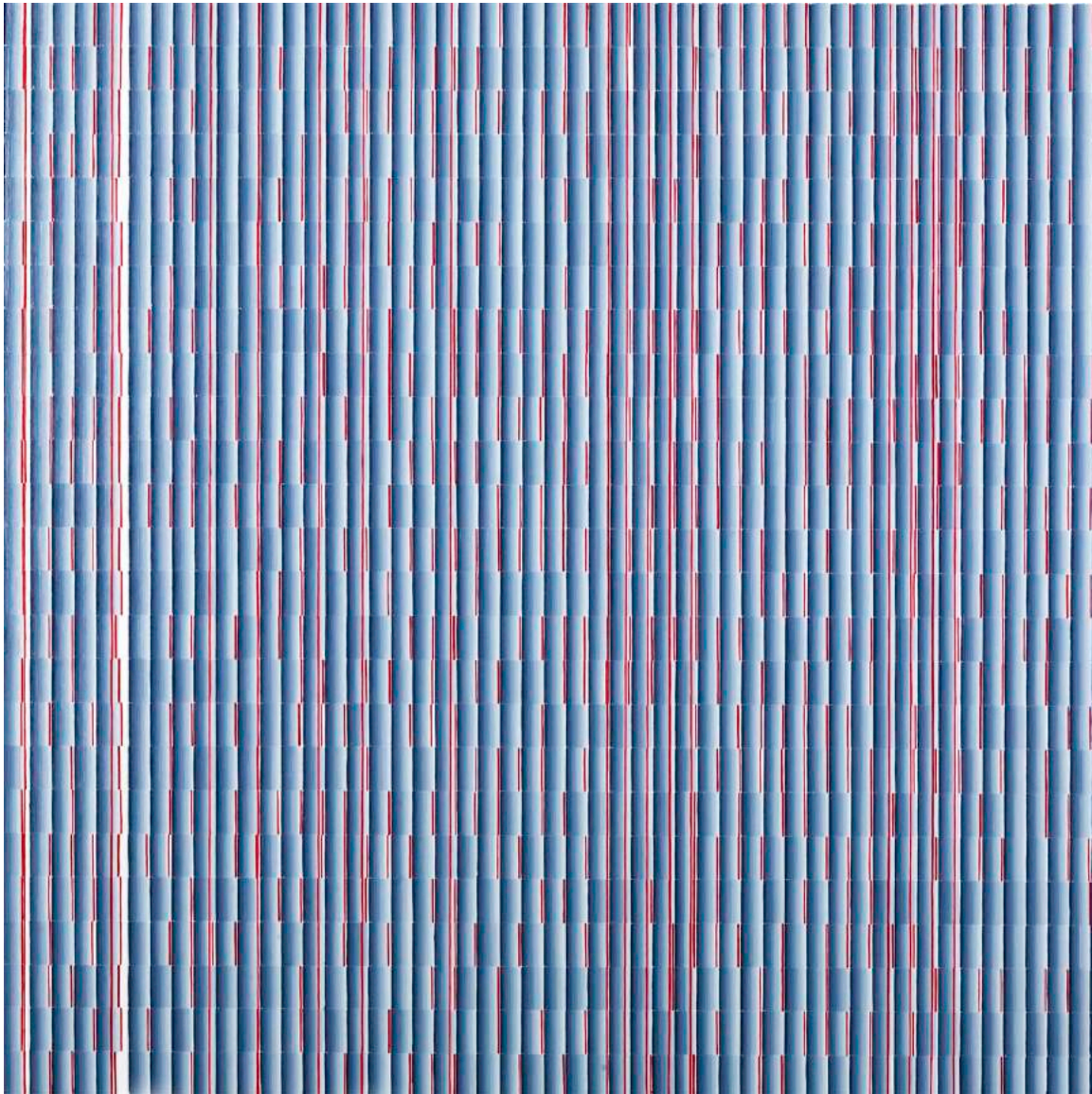
61 x 61 x 5 cm

2016

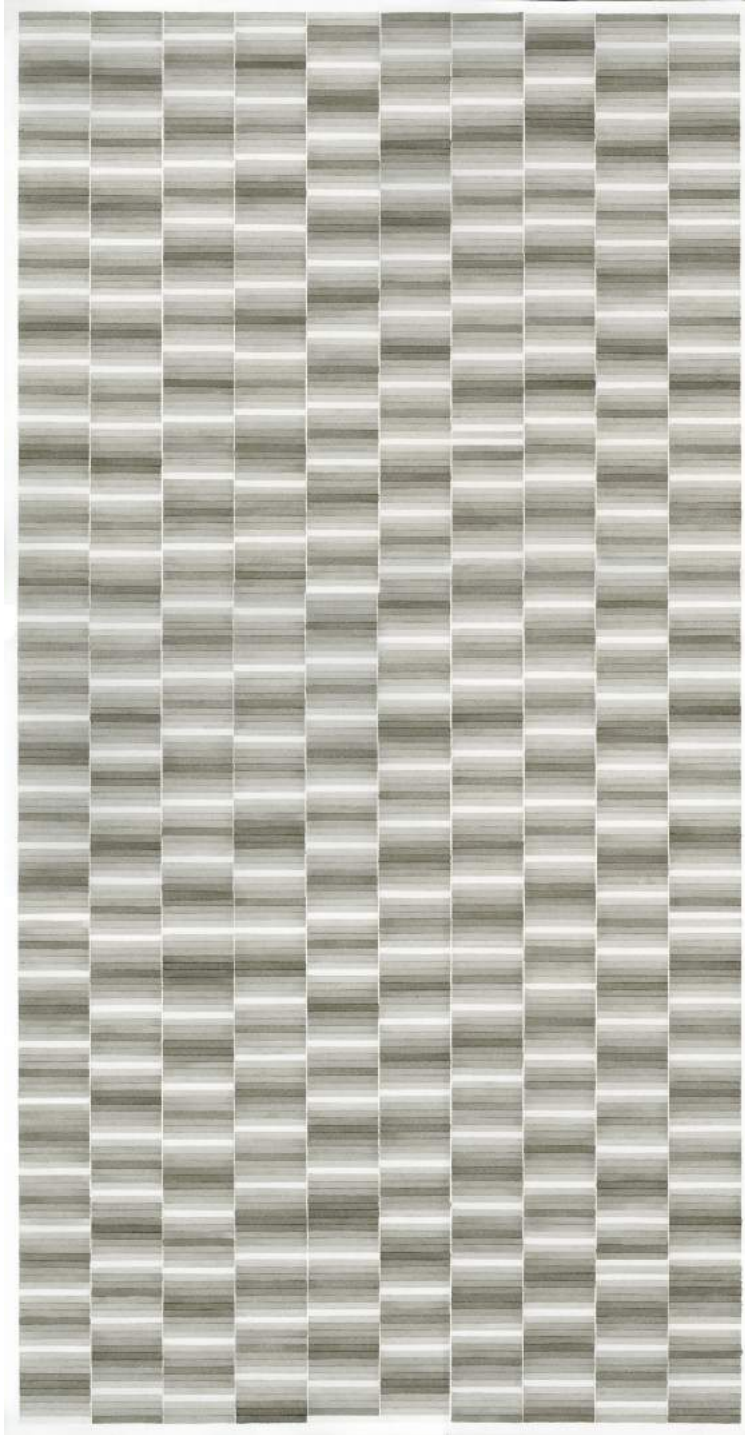


Convergence II
Silverpoint, navy blue gesso, Arches watercolour paper on wood
61 x 61 x 5 cm
2019

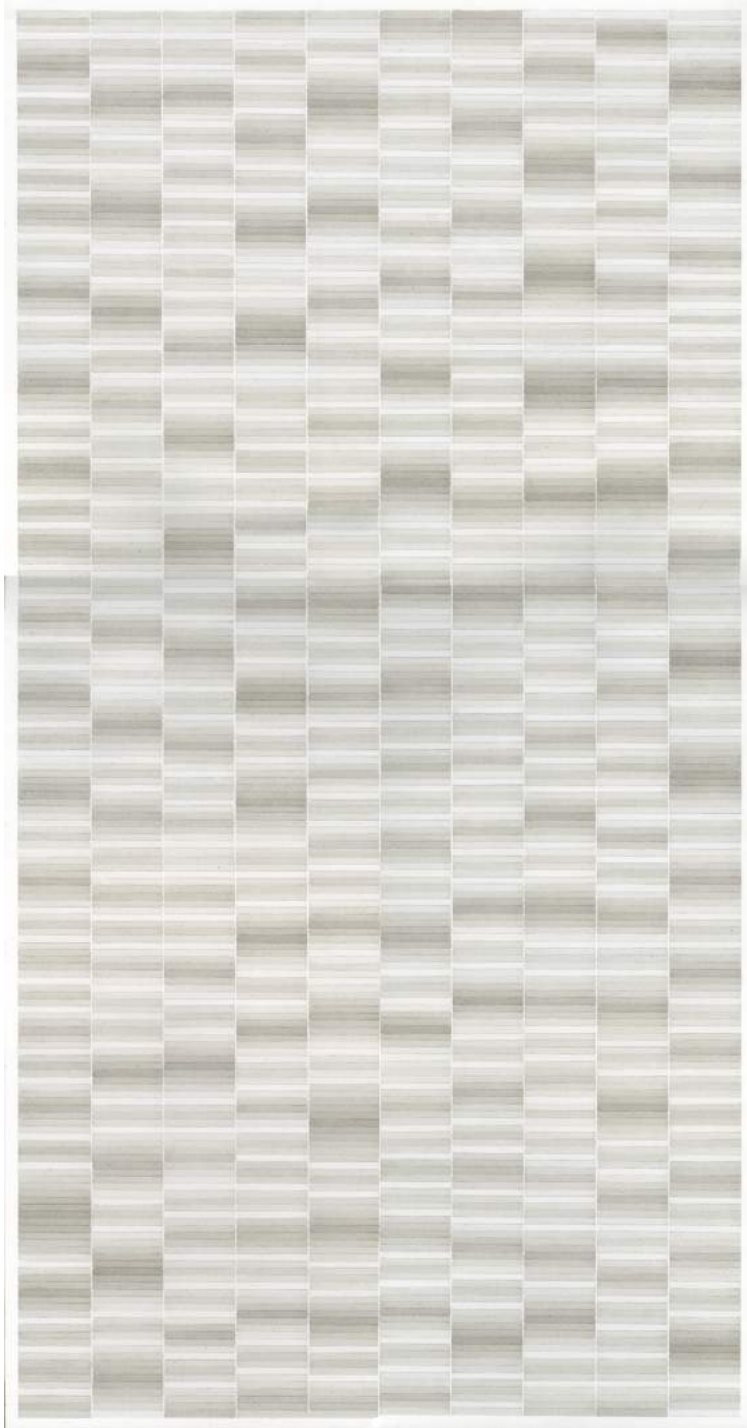
ISABEL ALBRECHT
1968 – 2013, Germany



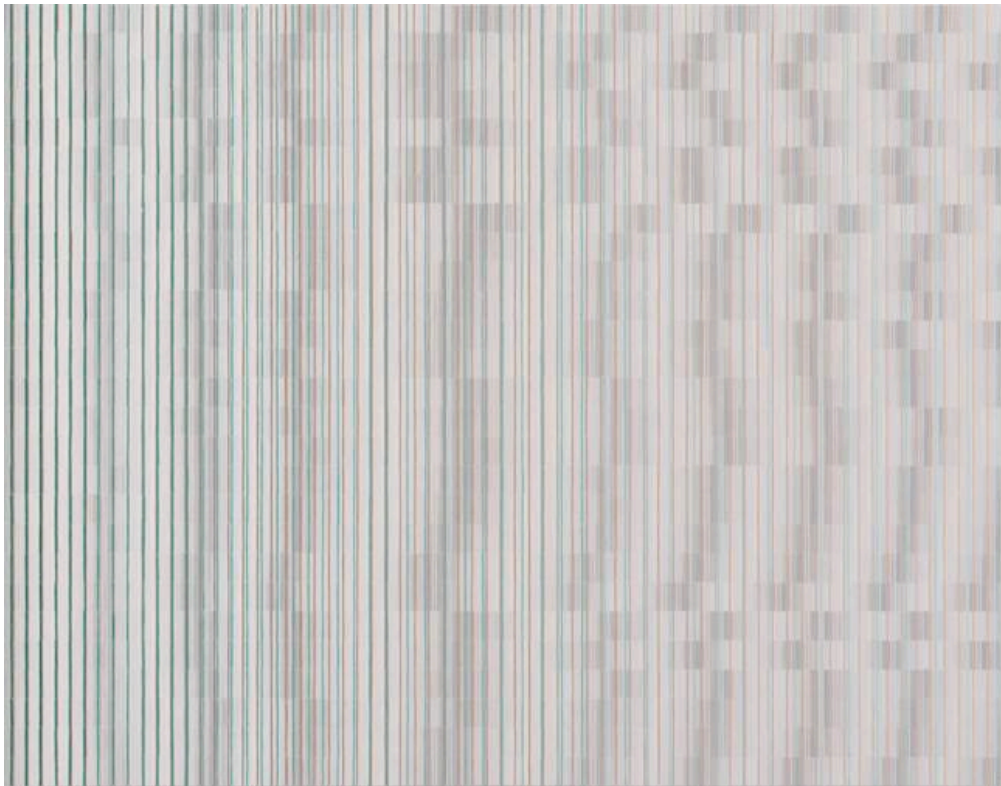
o.T. (Verlauf, paynes grey & rot)
Oil on wood
100 x 100 cm
2007



Untitled (z1-2011)
Ink on paper
100.5 x 52.7 cm
2011

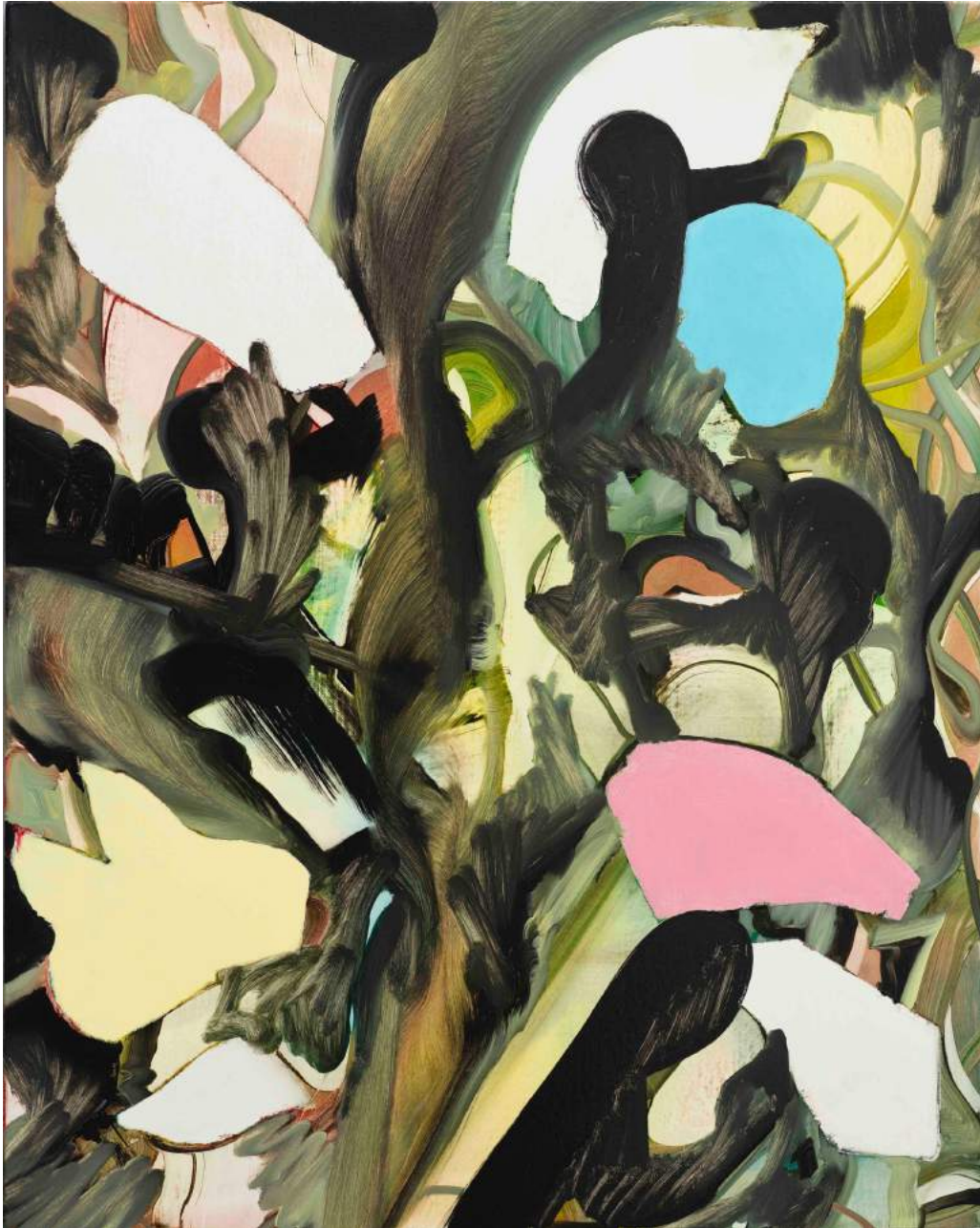


Untitled (z2-2011)
Ink and watercolour on paper
100.5 x 52.7 cm
2011

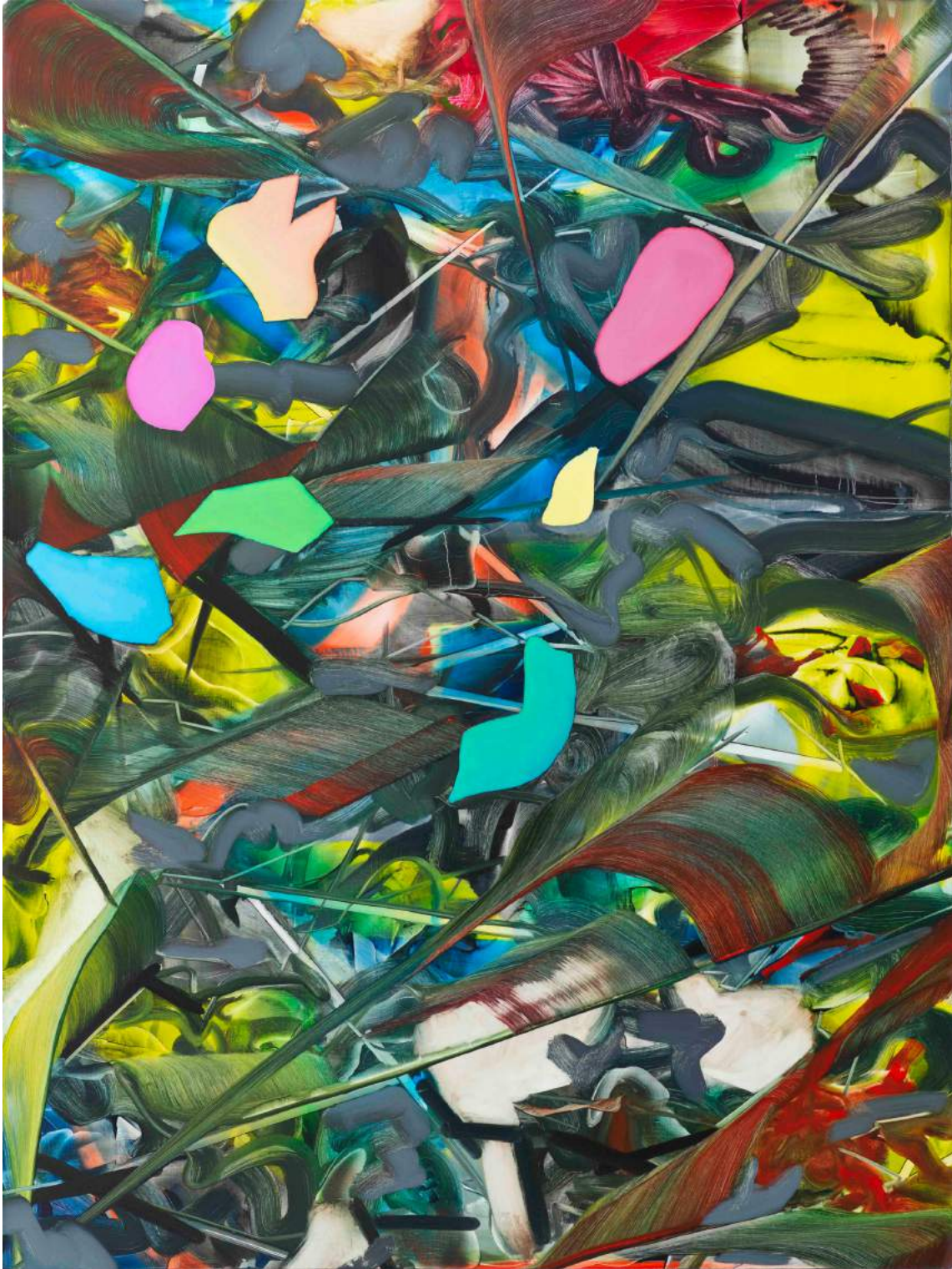


Untitled (6)
Oil on wood
55.5 x 70 cm
2007, signed

ANDY HARPER
Born 1971, United Kingdom



Chemical Boyhood
Oil on canvas
75 x 60 cm
2018



Pocket of Straws
Oil on linen
160 x 120 cm
2018



Thorensen
Oil on linen
81 x 62 cm
2017



Suppressed Error
Oil on linen
120 x 95 cm
2016

HANS KOTTER
Born 1966, Germany



Colour Code
Stainless steel, colour slide on Perspex & LED lights
200 x 13 x 13 cm
2018

Brief Introduction to the Artists

Thomas Müller's (born 1959, Germany) drawings are about the drawings process as such. Meticulous and free at the same time, they loop in and out of conversation with each other, connecting different directions in our drawing practice from Twombly to automated drawing as well as gestural and nature inspired compositions to minimal mark making. Müller's recent solo exhibition at the gallery *allele* revealed many new aspects, in particular overlayering and reworking older drawings. Müller is part of most significant drawing collections in German museums and has, amongst others, more than twenty works in the collection of the Centre Pompidou recently on display in the *10 years Prix Guerlain* exhibition.

Susan Schwalb (born 1944, USA) is considered the 'Grande Dame' of metal point drawing, bringing that historic medium into the 21st century. Working with a wide range of metal pens, her compositions are inspired by musical concepts and natural phenomena. In her recent exhibition at the gallery *Convergence*, together with Caroline Kryzecki, her large scale, rigorous, works on panel were presented in Europe for the first time. In the US she is part of more than 30 institutional collections amongst them the MET, the Museum of Modern Art and the National Gallery of Art in Washington. She recently had an acclaimed retrospective at the Arkansas Art Centre and is currently part of *Pushing Paper*, an exhibition in the British Museum drawn from the museum's collection.

Isabel Albrecht (1968-2013, Germany) will be presented in Miami for the first time as the access to her estate was only achieved last year, which was also the year of her first gallery exhibition since her passing away. Albrecht's serial drawings and paintings explore systems of the mind that are counterbalanced by the human hand. With conceptual ancestors like Sol Lewitt as inspiration the human aspect, the chance factor and the textural beauty of the composition emerge as equally important fields in Albrecht's practice. With two minor institutional exhibitions in Germany in 2017 Albrecht remains an artist to discover by the wider public and deservedly so. Her works are part of numerous private collections in Europe and the US.

Andy Harper (1971, United Kingdom) is one of the most technically skilled painters alive, in particular in regard to the so-called 'wet in wet' painting technique. Every shape, independent of how small or large they are, is usually a precise and skilled brushstroke that changes direction, pressure, colour mix and angle with every movement. Harper's motifs are reminiscent of a jungle-like flora and fauna, hauntingly beautiful yet at times even menacing, recently executed in a much more fluid painting style and composition. Andy Harper is part of several institutional collection in the UK and is privately collected world-wide. He will have a solo exhibition in a San Francisco gallery in the coming year.

Hans Kotter's (1966, Germany) *Colour Code* is probably the most successful sculpture developed by the light artist up to now. Pieced together from small cuttings of his own photographs of light breaking in glass or fluid into prismatic colour combinations, every sculpture is singular and has a different arrangement of shapes and tones, or in digital terms, an idiosyncratic code. Versions of the *Colour Code* are in private and corporate collections all over the world such as Fidelity, Warburg Pincus, Candy & Candy and Ron Dennis, to name just a few. Hans Kotter will have an institutional solo exhibition at MAK Cologne (Museum for Applied Arts) in 2020.